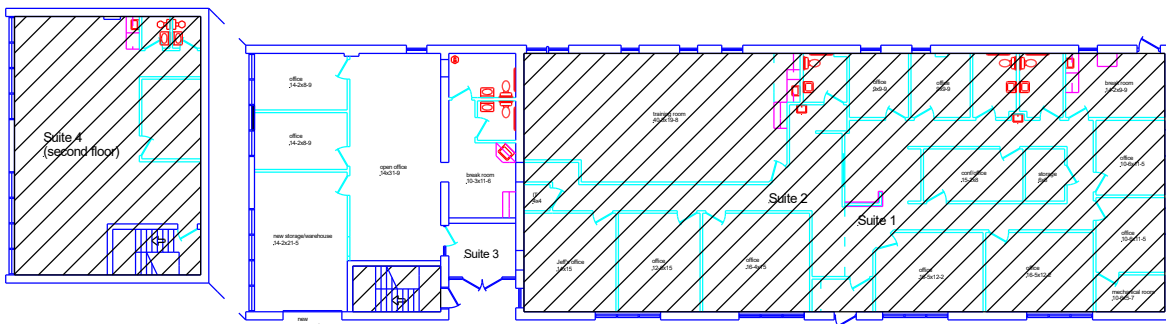


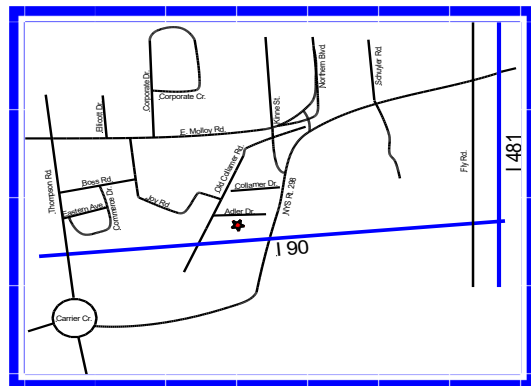
# FOR LEASE Office/Storage



## 3 Adler Drive, East Syracuse, NY



- 6,800 Sq. Ft. Office Building
- 1,480 SF Suite For Lease
- Many Windows
- Easy Access to Interstate 90
- Drive-in Door (9'x8')



6724 Thompson Road • Syracuse, NY 13211

For more info contact:  
Ed Rogers  
Phone: 315-463-8684  
Cell: 315-427-8510  
E-mail: [Ed@olivaco.com](mailto:Ed@olivaco.com)  
[www.olivaco.com](http://www.olivaco.com)

*All information is believed to be accurate. We are not responsible for misstatements of facts, errors or omissions, prior sales, and changes of price or withdrawal from the market without notice.*