

FOR LEASE

16 Corporate Cr., E. Syracuse



BUILDING SIZE:
27,000 Sq. Ft.

SPACE AVAILABLE:
7,500 SF (can be divided)

SPACE TYPE:
Office/Warehouse
2 Docks, 2 Drive-In Doors
& 4, 24" Docks

CEILING HEIGHT:
14' Clear
Sprinklered



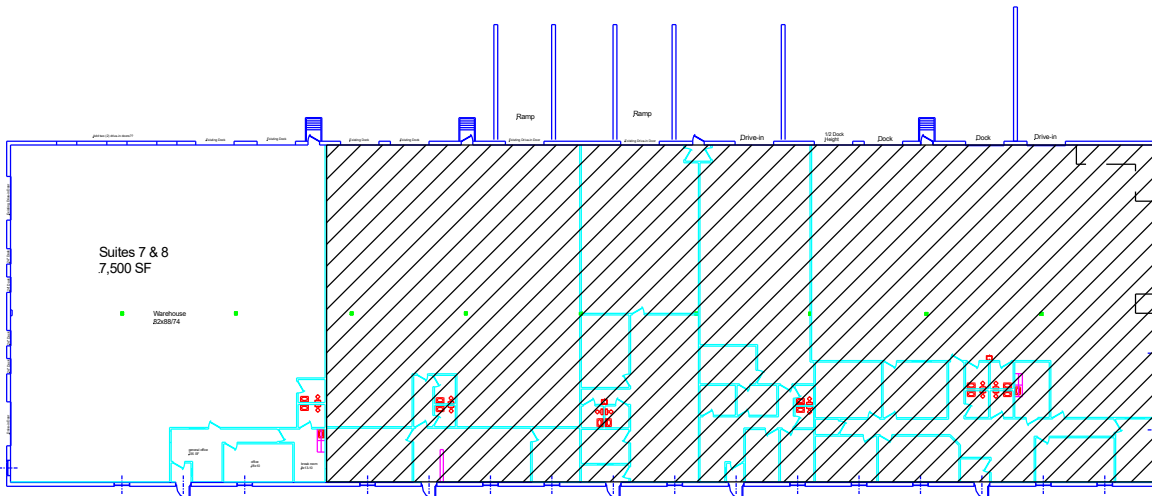
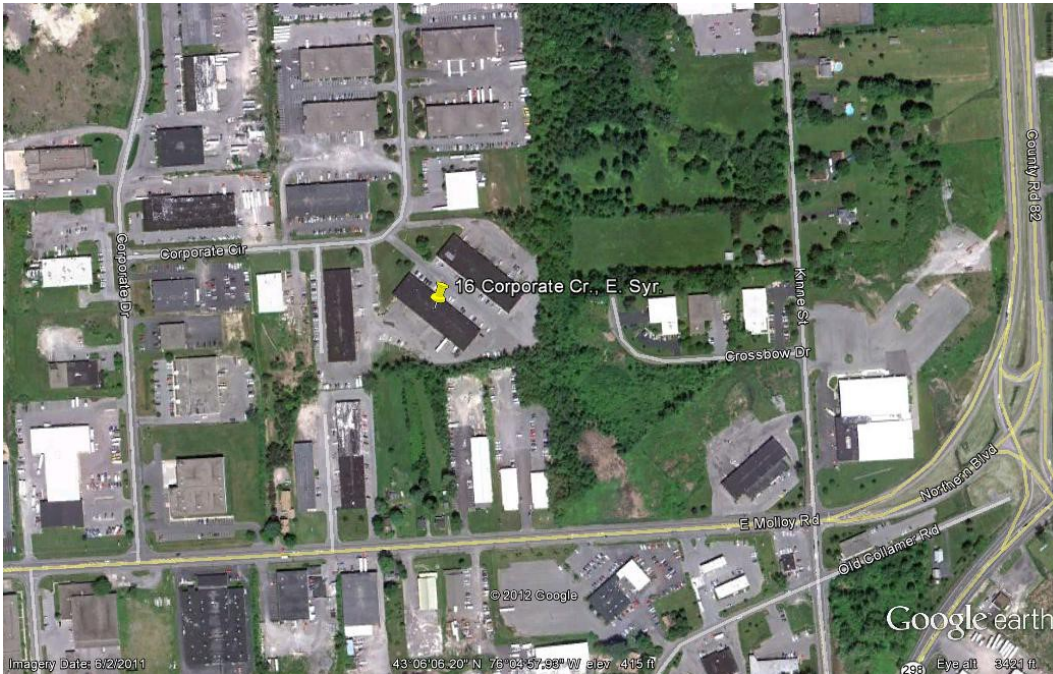
For more info contact:
Ed Rogers
Phone: 315-463-8684
Cell: 315-427-8510
E-mail: Ed@olivaco.com
www.olivaco.com

6724 Thompson Road • Syracuse, NY 13211

All information is believed to be accurate. We are not responsible for misstatements of facts, errors or omissions, prior sales, and changes of price or withdrawal from the market without notice.

FOR LEASE

16 Corporate Cr., E. Syracuse



For more info contact:
Ed Rogers
Phone: 315-463-8684
Cell: 315-427-8510
E-mail: Ed@olivaco.com
www.olivaco.com

6724 Thompson Road • Syracuse, NY 13211

All information is believed to be accurate. We are not responsible for misstatements of facts, errors or omissions, prior sales, and changes of price or withdrawal from the market without notice.