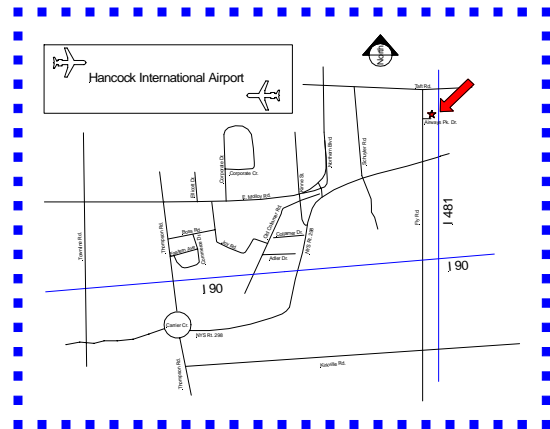
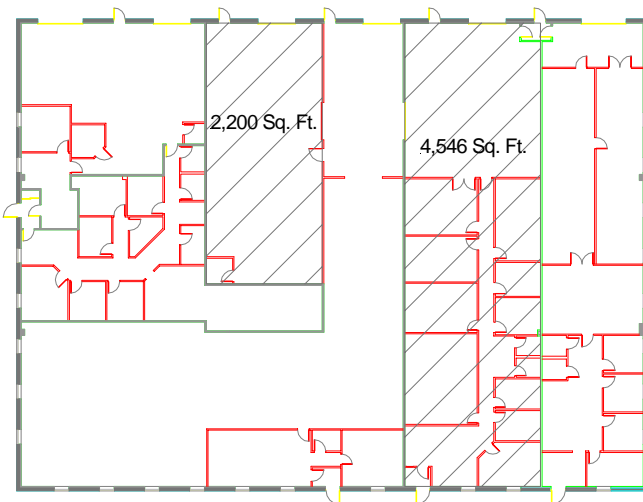


# FOR LEASE



7000 Airways Park Dr., E. Syracuse



**Immediate Occupancy Great Location Move-in Condition**

**2,200 Sq. Ft. of Warehouse with Drive-In Door**  
**4,546 Sq. Ft. of Office and Warehouse with a Dock Door**  
(spaces can be leased together)



For more info contact:  
Ed Rogers  
Phone: 315-463-8684  
Cell: 315-427-8510  
E-mail: [ed@olivaco.com](mailto:ed@olivaco.com)  
[www.olivaco.com](http://www.olivaco.com)

6724 Thompson Road • Syracuse, NY 13211

*All information is believed to be accurate. We are not responsible for misstatements of facts, errors or omissions, prior sales, and changes of price or withdrawal from the market without notice.*