

FOR SALE OFFICE BUILDING with DOCK

PRICE REDUCED



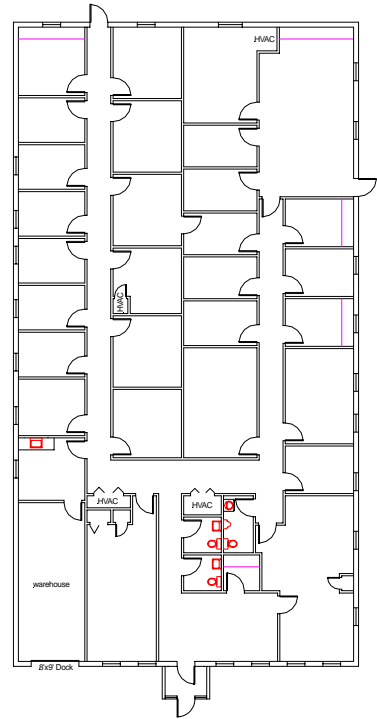
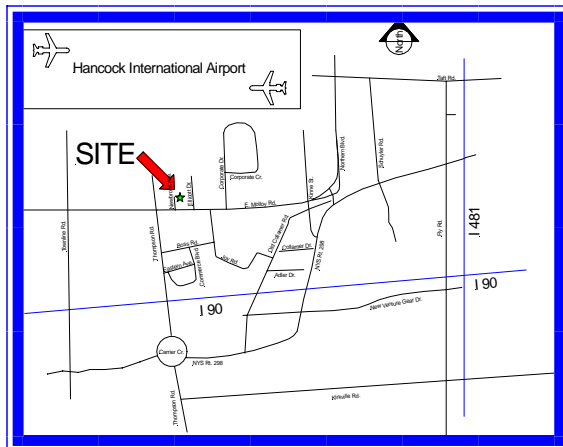
6806 Newbrook Avenue, East Syracuse

6,200 Sq. Ft. Building with Dock Door

Located just off of E. Molloy Road

Many Offices with Lots of Windows

Sales Price: \$239,000



6724 Thompson Road • Syracuse, NY 13211

For more info contact:

Ed Rogers

Phone: 315-463-8684

Cell: 315-427-8510

E-mail: ed@olivaco.com

www.olivaco.com

All information is believed to be accurate. We are not responsible for misstatements of facts, errors or omissions, prior sales, and changes of price or withdrawal from the market without notice.