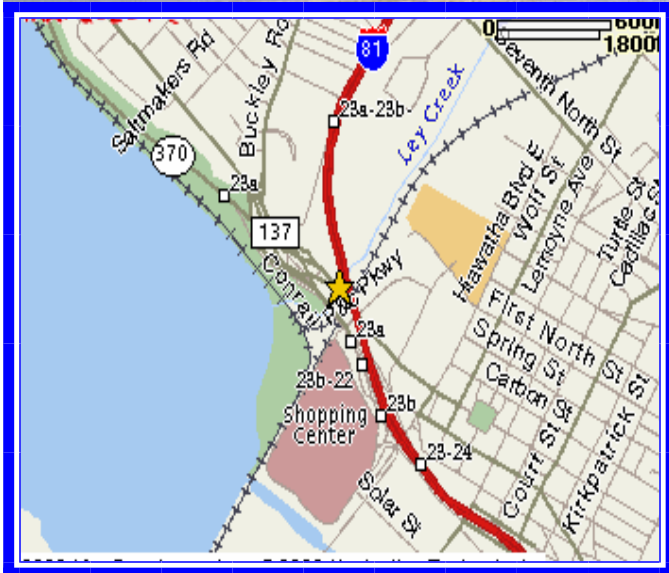


# FOR SALE

## 2220 PARK ST., SYRACUSE



- **5,100 Square Foot Office with Warehouse Building**
- **Two (2) Drive-in Doors**
- **Close Proximity to Carousel Center and the future Destiny USA**
- **\$12,000 income per year from Bill Board facing Route 81**
- **Sales Price: \$200,000**



6724 Thompson Road • Syracuse, NY 13211

*All information is believed to be accurate. We are not responsible for misstatements of facts, errors or omissions, prior sales, and changes of price or withdrawal from the market without notice.*

For more info contact:

Ed Rogers

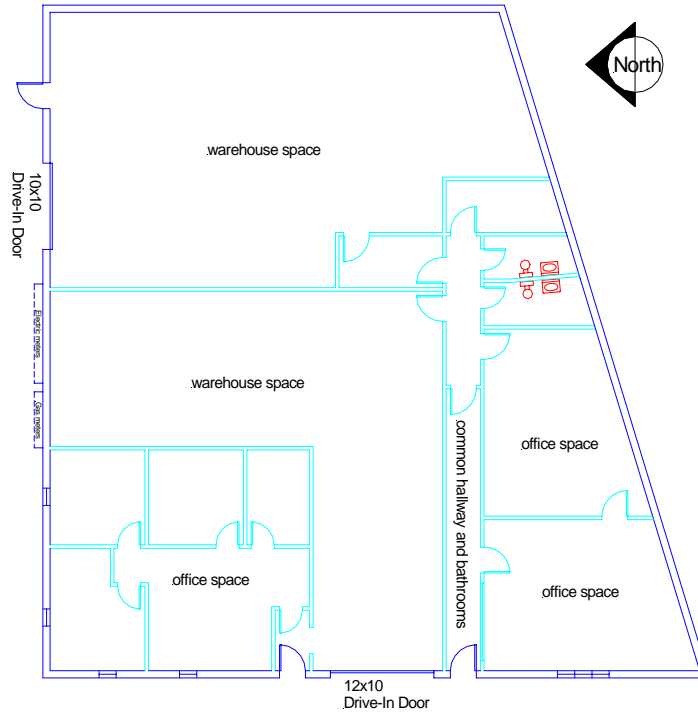
Phone: 315-463-8684

Cell: 315-427-8510

E-mail: [Ed@olivaco.com](mailto:Ed@olivaco.com)

[www.olivaco.com](http://www.olivaco.com)

**FOR SALE**



**2220 PARK ST., SYRACUSE**

## FEATURES:

- Building Divides into Two (2) Rentable Spaces—2,000 & 3,100 Sq. Ft.
- 800 & 1,100 Sq. Ft. Office Areas with Shared Bathrooms
- Air Conditioning & Heat in Office Areas & Heat Only in Warehouses
- Ceiling Height is 12 Feet Clear in Warehouse
- Two (2) Grade Level Overhead Doors (1 Door Servicing Each space)
- 200 Amp, 3 Phase Power
- \$12,000 Yearly Income from Bill Board Sign
- Owner Financing May Be Available



For more info contact:

Ed Rogers

Phone: 315-463-8684

Cell: 315-427-8510

E-mail: [Ed@olivaco.com](mailto:Ed@olivaco.com)

[www.olivaco.com](http://www.olivaco.com)

6724 Thompson Road • Syracuse, NY 13211

*All information is believed to be accurate. We are not responsible for misstatements of facts, errors or omissions, prior sales, and changes of price or withdrawal from the market without notice.*