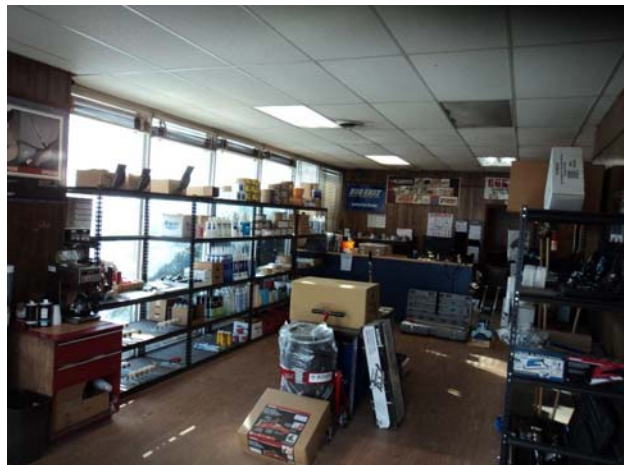
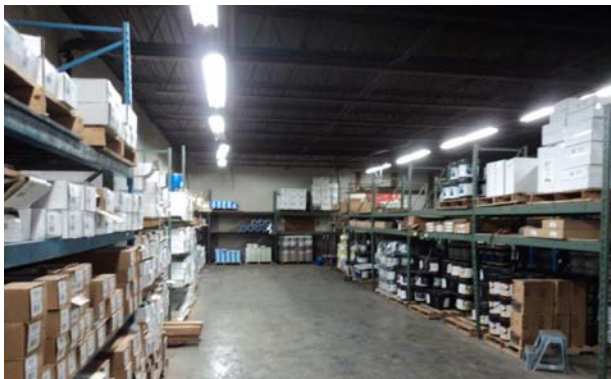


FOR SALE: 6,568 SF Building
6359 Collamer Dr., E. Syracuse, NY



- **Business Relocating**
- **Steps Away from Rt. 298**
- **2 Dock Doors (8'x10') and 1 Drive-in Door (10'x10')**
- **12' Ceiling Height in Warehouse**
- **New Roof in 2016**
- **Easy Access to NYS Thruway & I-481**
- **Sale Price: \$325,000**



6724 Thompson Road • Syracuse, NY 13211

All information is believed to be accurate. We are not responsible for misstatements of facts, errors or omissions, prior sales, and changes of price or withdrawal from the market without notice.

For more info contact:
Ed Rogers
Phone: 315-463-8684
Cell: 315-427-8510
E-mail: Ed@olivaco.com
www.olivaco.com