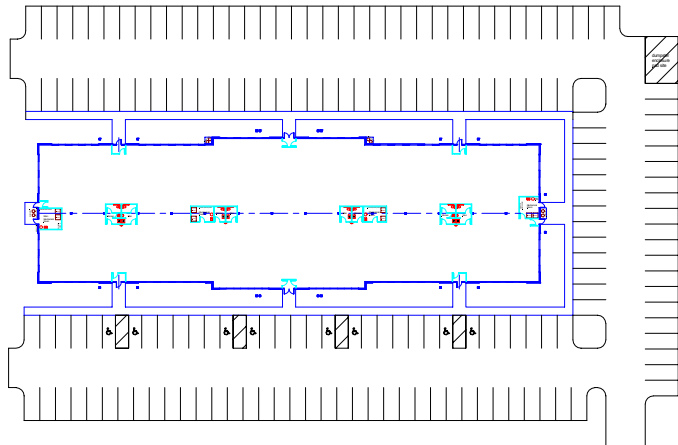


MYERS ROAD PROFESSIONAL CENTER



- 26,000 Class A Medical/Office Building For Sale or Lease
- Traffic Light Access
- Easy Access to Interstate 481 and NYS Thruway
- Suites from 4,000 to 26,000 Sq. Ft.



6724 Thompson Road • Syracuse, NY 13211

For more info contact:
 Ed Rogers
 Phone: 315-463-8684
 Cell: 315-427-8510
 E-mail: Ed@olivaco.com
www.olivaco.com