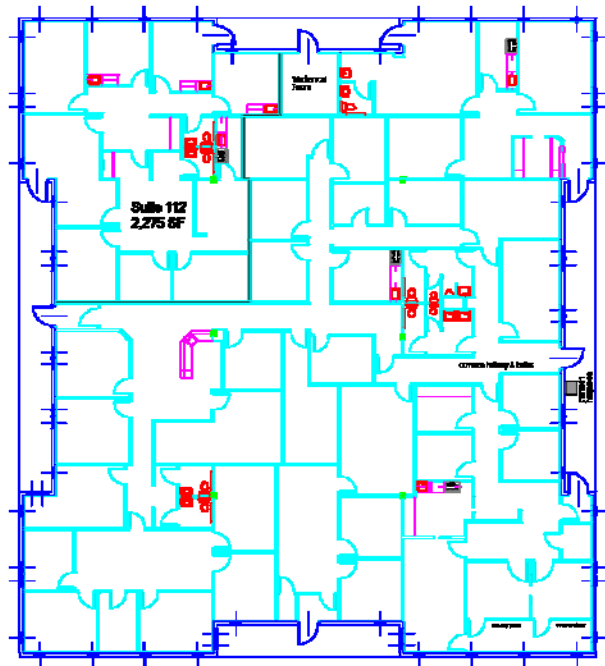
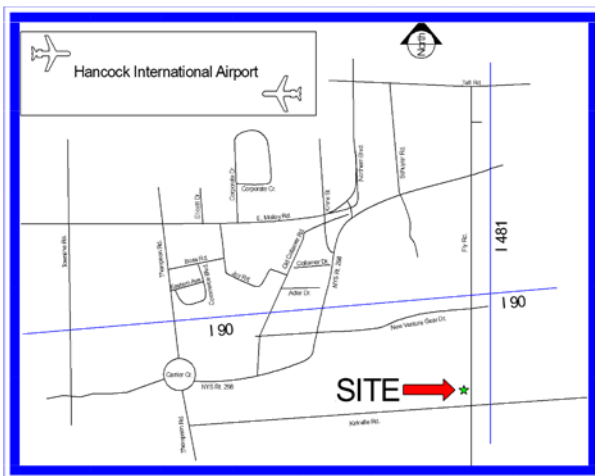


FOR LEASE—Medical/Office

6311 Fly Road, East Syracuse



- 12,000 SF Professional Office Bldg.
- 2,275 SF Usable Space
- Medical/Office Space w/ Own Entrance
- Corner Space—Lots of Glass
- New Illuminated Signage Available
- Ample Parking Next To Building



For more info contact:
Ed Rogers
Phone: 315-463-8684
Cell: 315-427-8510
E-mail: Ed@olivaco.com
www.olivaco.com

6724 Thompson Road • Syracuse, NY 13211

All information is believed to be accurate. We are not responsible for misstatements of facts, errors or omissions, prior sales, and changes of price or withdrawal from the market without notice.